

Somers High School

5 Vision Boulevard, Somers, CT 06071
CEEB #070683

David Brown, Principal **Michale Szafir, Assistant Principal**
Phone: (860) 749-2270 FAX: (860) 749-9264 www.somers.k12.ct.us

School Profile • 2023 - 2024

School Counselors:

Lisa Grenier	lisa.grenier@somers.k12.ct.us
Jenny Devlin	jenny.devlin@somers.k12.ct.us
Shannon Rooney	shannon.rooney@somers.k12.ct.us

MISSION STATEMENT

Everyone at Somers High School will work to foster a learning community characterized by academic excellence, intellectual curiosity, creative expression, personal growth, responsible citizenship, and respect for all.

COMMUNITY & SCHOOL

Somers, CT is a picturesque rural-suburban town in Tolland County with a population of approximately 10,250 and a rich agricultural history. Our public school district is comprised of three educational facilities located on a 115-acre campus. Our campus is also home to the town's public library and borders the town's main recreational area. This unique setting is known as the Somers Educational Complex, and it is located on Vision Boulevard.

Somers High School is a public high school, housing grades 9-12 with a total enrollment of approximately 384 students. Our faculty is a highly qualified staff of 60, including 1 faculty member with a PhD, 3 Sixth Year certificates, 49 Master's degrees and 7 Bachelor's degrees.

ACCREDITATION

Somers High School is accredited by the New England Association of Schools and Colleges (NEASC) and the Connecticut State Department of Education. NEASC has commended Somers High School for having "a safe, positive, respectful, and supportive culture" with a "dedication to class sizes that support effective teaching and learning."

SCHEDULE

The schedule is an eight period, rotating schedule. Classes meet an average of 40 minutes.

GRADUATION REQUIREMENTS

25 Credits (Minimum passing grade D-60%)

English - 4 credits	Math - 4 credits
Social Studies - 3 credits	Science - 3 credits
Fine Arts - .5 credits	Practical Arts - .5 credits
World Language -1 credit	STEM Electives- 1.5 credits
Humanities Elective- .5 credits	Physical Education/Health - 2.0 credits
Capstone- 1.0 credit	Personal Finance- .5 credits

HONORS & ADVANCED PLACEMENT

Honors English 9,10,11,12	Honors Algebra 2	Honors Research and Development
AP English Lit 12	Honors Geometry	Honors Engineering Graphics I, II
AP/ECE Lang & Comp.	Honors Precalculus	Honors CNC Machining
Honors Speech and Debate	Honors Calculus	AP/ECE US History
Honors French 2,3,4,5	AP Calculus	AP World History
Honors Spanish 2,3,4,5	AP Statistics	AP Psychology
Honors Art	AP Computer Sci. Principles	AP Physics
Honors Portfolio	Honors Biology	Honors Civics/Pre-AP US History
AP Studio Art	AP/ECE Biology	
Honors Band	Honors Chemistry	
Honors Choir	AP/ECE Chemistry	
Honors Chorus	Honors Physics	

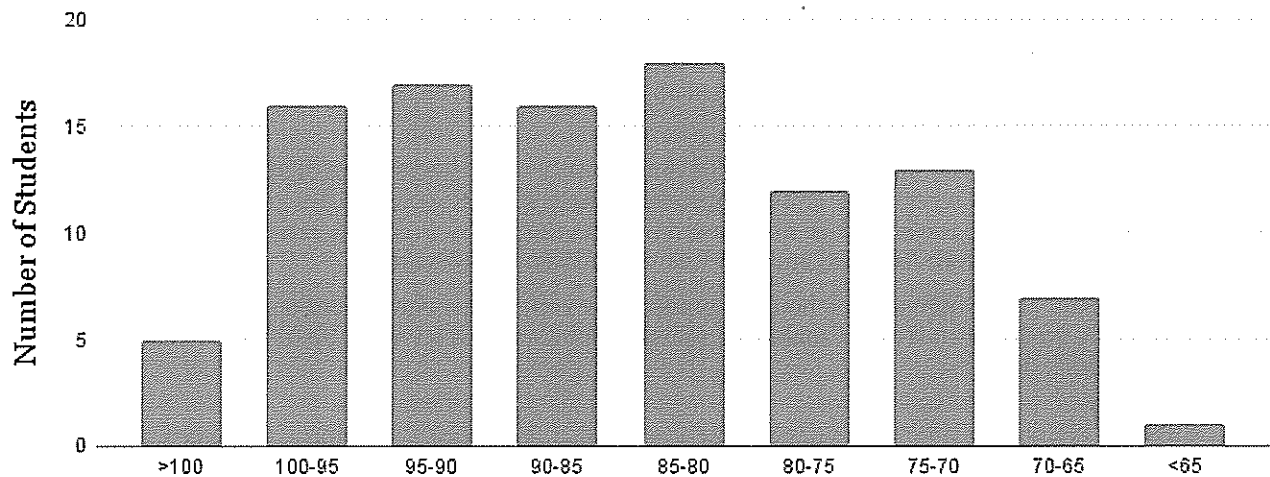
AP Exams 2023: 72 students took 127 exams. 15% scored 5, 31% scored 4, 39% scored 3.

SPECIAL PROGRAMS

- Early College Experience Program (ECE) offers college credit from the University of Connecticut in English, Biology, Chemistry and U.S. History.
- College Career Pathways Program offered in conjunction with Asnuntuck Community College allows students to take selected courses for community college credit.
- High School Partnership Program with Asnuntuck Community College allows students to take college courses and earn both college and high school credit.
- Somers High School Career program offers options for job shadowing, independent study, and other career exploration activities.
- 1:1 Device Program

GRADE POINT AVERAGE 100 point weighted GPA system

Weighted GPA Distribution



CLASS RANK/COURSE WEIGHTING

Weighted GPA is used to determine class rank and cumulative GPA. Academic and College Preparatory courses carry a 1.0 weighted factor. Honors level courses carry a 1.1 weighted factor. AP and AP/ECE level courses carry a 1.2 weighted factor.

During spring of 2020 remote learning, numerical grades remained on our 100 point weighted scale.

Class rank is established at the end of a student’s junior year. All courses that a student takes at Somers High School are used in determining rank except those receiving a P, NP, MED, WD/WDP, Partnership and other outside courses. In order to be included in rank, a student must enter SHS by the 2nd semester of their sophomore year.

The highest weighted GPA for the Class of 2024 is 104.0247 at the end of junior year.

SAT SUMMARY-CT School Day Testing

Class of 2024 - Students participated: 100

	<u>EBRW</u>	<u>Math</u>
75 th Percentile	570	570
MEAN	515	508
25 th Percentile	450	440

Classes of 2022 & 2023 - Students participated: 211

	<u>EBRW</u>	<u>Math</u>
MEAN	549	547

POSTSECONDARY PLANS

	<u>4 year</u>	<u>2 year</u>	<u>Career Education</u>	<u>Military</u>
Class of 2023	59%	20%	3%	1%
Classes of 2021-2022 average	64%	20%	3%	1%